



宇华国际科技有限公司
YuHua INT,L Technology Co., LIMITED

Tel :0755-21010980

web:www.yhwdisplay.com

**SPECIFICATION
FOR
LCD MODULE**

Customer : _____

Product Model: YH101MS4003

Sample code: _____

Designed by	Checked by	Approved by

Final Approval by Customer

<input type="checkbox"/> LCM Machinery OK Checked By _____ <input type="checkbox"/> LCM Display OK Checked By _____	<input type="checkbox"/> LCM OK <input type="checkbox"/> NG , Problem survey: Approved By _____
--------------------------------------------------------------------------------------------------------------------------------------------------------	-----------------------------------------------------------------------------------------------------------------------------

※The specification of “TBD” should refer to the measured value of sample . If there is difference between the design specification and measured value, we naturally shall negotiate and agree to solution with customer.



宇华国际科技有限公司

YuHua INT,L Technology Co., LIMITED

Table of Contents

1. FEATURES-----	4
2. GENERAL SPECIFICATIONS-----	4
3. PIN DESCRIPTION-----	5
3.1 Golden finger-----	5
3.2 PIN assignment-----	6
3.3 Advice circuit for customer system-----	8
4. ABSOLUTE MAXIMUM RATING-----	10
5. DC CHARACTERISTICS-----	11
5.1 Parameter-----	11
5.2 Current Consumption-----	11
5.3 Power Sequence-----	11
6. AC CHARACTERISTICS-----	14
6.1 Data Input Format-----	14
6.2 Parallel RGB Input Timing Table-----	14
6.3 AC Electrical Characteristic-----	15
6.4 Timing-----	16
6.5 Data Input Format-----	17
7. OPTICAL CHARACTERISTICS-----	18
7.1 Optical Specification-----	18
7.2 Basic measure condition-----	18
8. QUALITY ASSURANCE-----	20
9. HANDING CAUTIONS-----	21
9.1 ESD (Electrical Static Discharge) Strategy-----	21
9.2 Environment-----	21
9.3 Others-----	21
10. MECHANICAL DRAWING-----	22
11. PACKAGE DRAWING-----	23
11.1 Packaging Material Table-----	23
11.2 Packaging Quantity-----	23
11.3 Packaging Drawing-----	23



1. General Specifications

The specification YH101MS5003 is a 10.1 "(1024x600) TFT Liquid Crystal Display module with LED Backlight unit , 40 pin LVDS interface, normally white transmissive display mode. This module will be applied to Consumer Electronics(CE Application)

No.	Item	Specification	Remark
1	LCD size	10.1 inch(Diagonal)	
2	Driver element	a-Si TFT active matrix	
3	Resolution	1024 × 3(RGB) × 600	
4	Display mode	Normally White, Transmissive	
5	Pixel size	0.1506(W) × 0.1432(H) mm	
6	Active area	154.2144(W) × 85.92(H) mm	
7	Module size	229.66 (H) x 133.88 (V) x5.1(mm)	Note 1
8	Surface treatment	Hard Coating	
9	Color arrangement	RGB-stripe	
10	Interface	LVDS	
11	View direction(Gray Inversion)	6 O'Clock	
12	Backlight power consumption	TBD	
13	Panel power consumption	0.4 W (Typ.)	
14	Weight	TBD	
15	IC	ILI6150 &ILI5120	



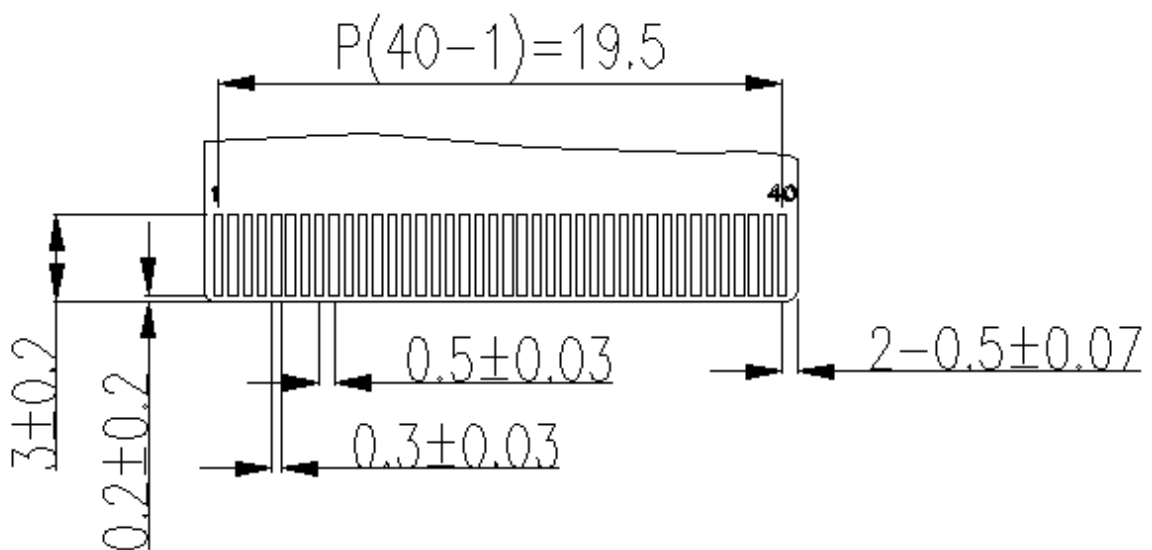
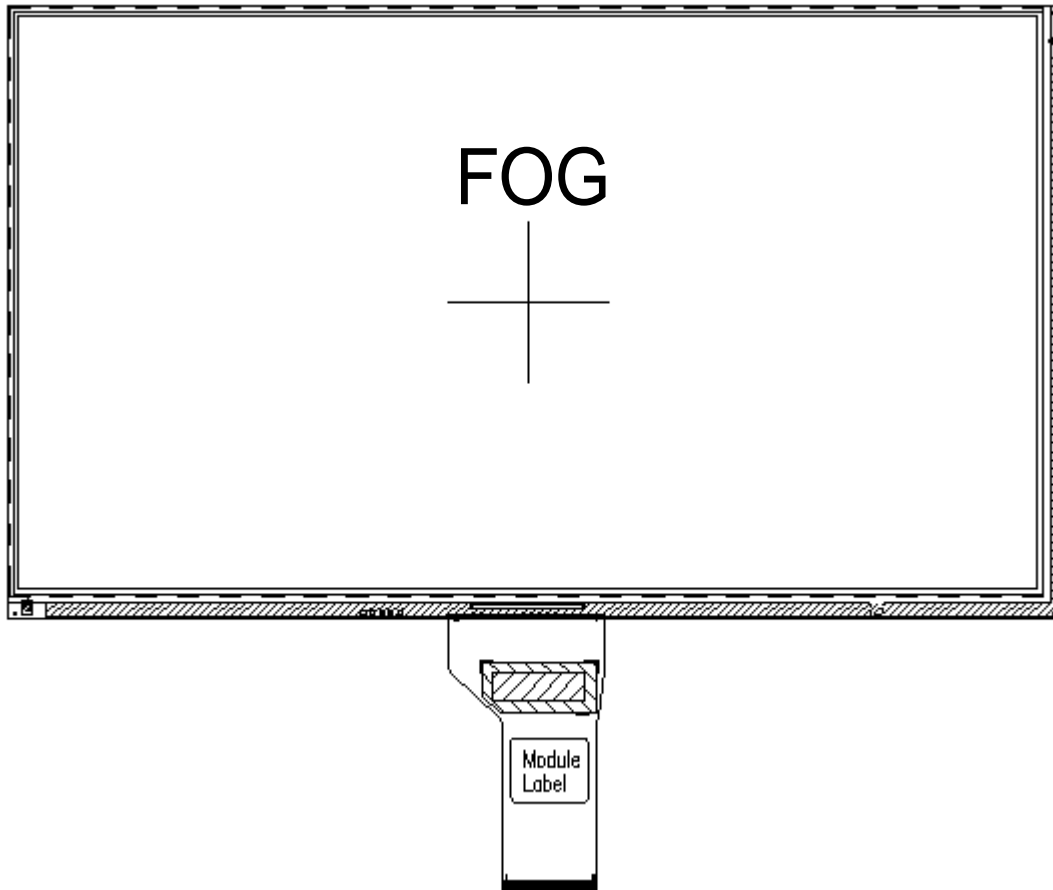
宇华国际科技有限公司

YuHua INT,L Technology Co., LIMITED

3. Pin Description

3.1 Golden finger

PIN pitch = 0.5mm



3.2 PIN Assignment

No	Symbol	I/O	Function	Remark
1	VCOM	P	Common Voltage	



宇华国际科技有限公司

YuHua INT,L Technology Co., LIMITED

2	VDD	P	Power Voltage for digital circuit	
3	VDD	P	Power Voltage for digital circuit	
4	NC	-	No connection	
5	RESET	I	Global reset pin	
6	STBYB	I	Standby mode, Normally pulled high STBYB = "1", normal operation STBYB = "0", timing controller, source driver will turn off, all output are High-Z	
7	GND	P	Ground	
8	RXIN0-	I	LVDS differential data input 0-	
9	RXIN0+	I	LVDS differential data input 0+	
10	GND	P	Ground	
11	RXIN1-	I	LVDS differential data input 1-	
12	RXIN1+	I	LVDS differential data input 1+	
13	GND	P	Ground	
14	RXIN2-	I	LVDS differential data input 2-	
15	RXIN2+	I	LVDS differential data input 2+	
16	GND	P	Ground	
17	RXCLKIN-	I	LVDS differential clock input -	
18	RXCLKIN+	I	LVDS differential clock input +	
19	GND	P	Ground	
20	RXIN3-	I	LVDS differential data input 3-	
21	RXIN3+	I	LVDS differential data input 3+	
22	GND	P	Ground	
23	NC	-	No connection	
24	NC	-	No connection	
25	GND	P	Ground	
26	NC	-	No connection	
27	PWMO	O	Backlight CABC controller signal output	
28	SELB	I	6bit/8bit mode select	Note 1
29	AVDD	P	Power for Analog Circuit	
30	GND	P	Ground	
31	LED-	P	LED Cathode	
32	LED-	P	LED Cathode	
33	L/R	I	Horizontal inversion	Note 3
34	U/D	I	Vertical inversion	Note 3
35	VGL	P	Gate OFF Voltage	
36	CABCEN1	I	CABC H/W enable	Note 2



宇华国际科技有限公司

YuHua INT,L Technology Co., LIMITED

37	CABCEN0	I	CABC H/W enable	Note 2
38	VGH	P	Gate ON Voltage	
39	LED+	P	LED Anode	
40	LED+	P	LED Anode	

I: input, O: output, P: power

Note1: If LVDS input data is 6 bits, SELB must be set to High;

If LVDS input data is 8 bits, SELB must be set to Low.

Note2: When CABC_EN="00", CABC OFF.

When CABC_EN="01", user interface image.

When CABC_EN="10", still picture.

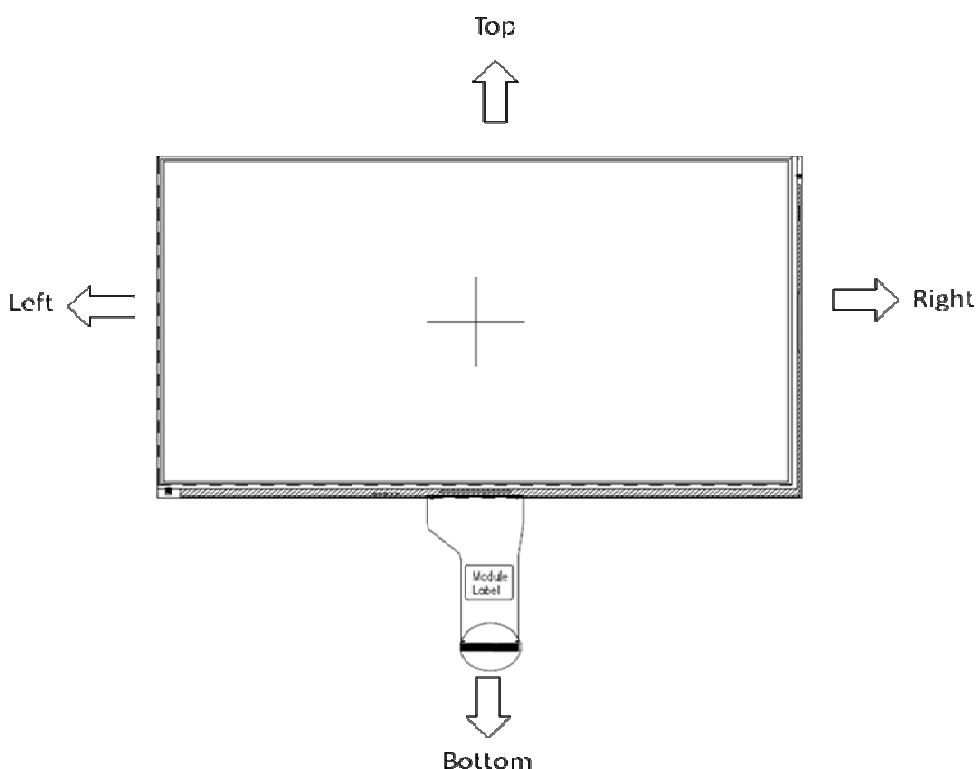
When CABC_EN="11", moving image.

When CABC off, don't connect DIMO, else connect it to backlight.

Note 3: Selection of scanning mode

Setting of scan control input		Scanning direction
U/D	L/R	
GND	VDD	Up to down, left to right
VDD	GND	Down to up, right to left
GND	GND	Up to down, right to left
VDD	VDD	Down to up, left to right

Definition of scanning direction .Refer to the figure as below



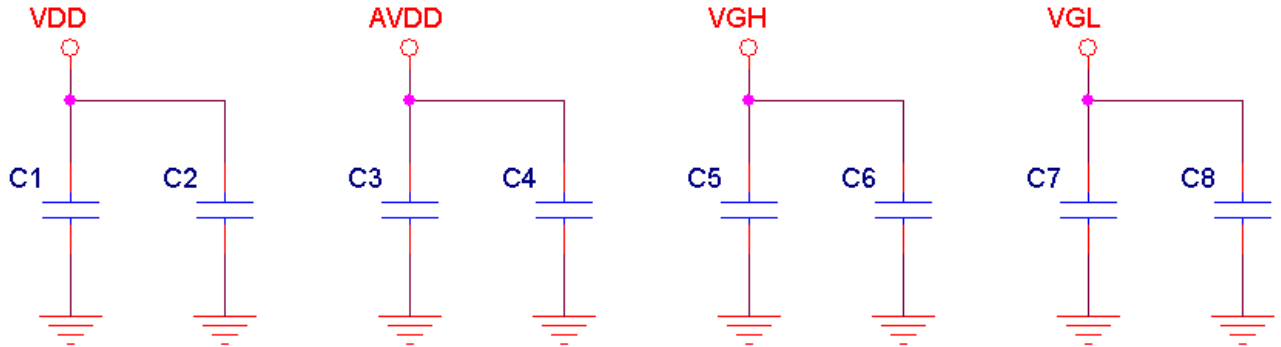


宇华国际科技有限公司

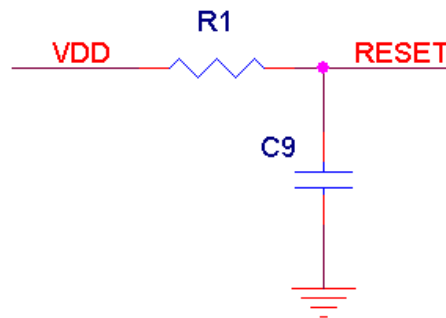
YuHua INT,L Technology Co., LIMITED

3.3 Advice circuit for customer system

3.3.1 Power PIN: AVDD/VDD/VGH/VGL

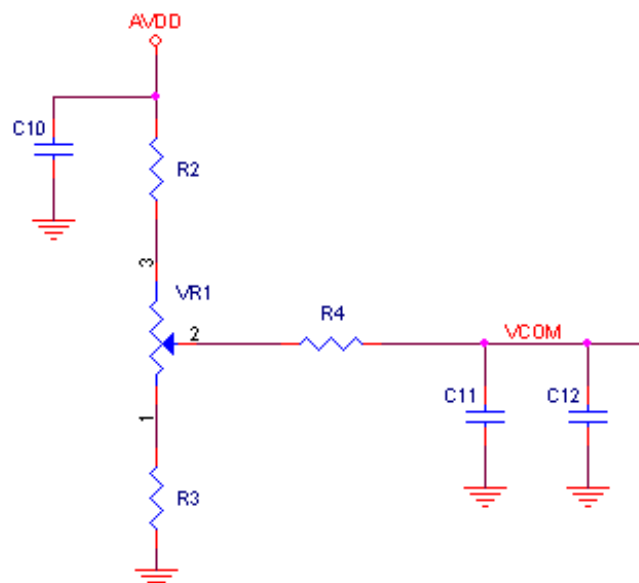


3.3.2 Control PIN: RESET



3.3.3 VCOM

Typical VCOM is only a reference value, it must be optimized according to each LCM. Be sure to use VR;

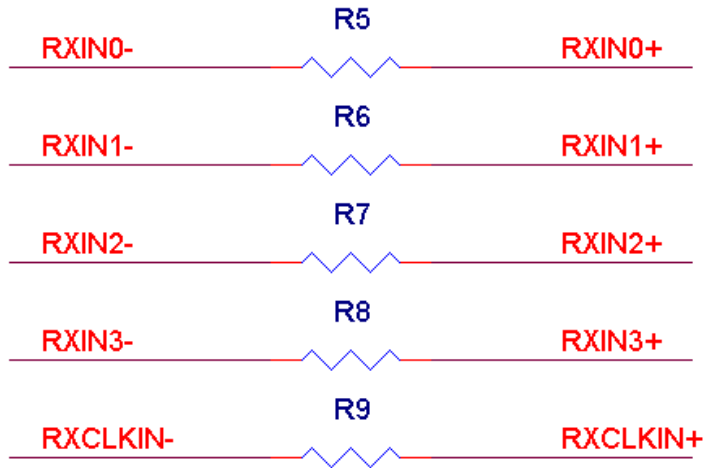




宇华国际科技有限公司

YuHua INT,L Technology Co., LIMITED

3.3.4 LVDS signal: LVDS terminal resistor



3.3.5 Suggestion BOM

Location	Description
C1,C11	10uF,X5R,10V
C2,C12	100nF,X5R,10V
C3,C7	10uF,X5R,25V
C4,C8	100nF,X5R,25V
C5	10uF,X5R,50V
C6	100nF,X5R,50V
C9	1uF,X5R,10V
C10	1uF,X5R,25V
R1	10Kohm,1%
R2	12Kohm,1%
R3	10Kohm,1%
R4	0ohm,1%
VR1	10Kohm,1%
R5,R6,R7,R8,R9	100ohm,1%



宇华国际科技有限公司

YuHua INT,L Technology Co., LIMITED

4. ABSOLUTE MAXIMUM RATING

Item	Symbol	Min.	Max.	Unit	Remark
Power Supply Voltage	VDD	-0.3	3.6	V	
	AVDD	-0.3	15	V	
	VGH	-0.3	30	V	
	VGL	-15	0.3	V	
Storage temperature	Tstg	-30	+80	°C	
Operating Temperature	Topr	-20	+70	°C	

Note:

- (1) All of the voltages listed above are with respect to GND= 0V
- (2) Device is subject to be damaged permanently if stresses beyond those absolute maximum ratings listed above.

4.1.BacklightCharacteristic

Item	Symbol	Min	Typical	Max	Unit
LED module Forward voltage	V_{LED}	--	18.6	--	V
LED module current	I_{LED}	--	210	--	mA
L/G Surface Luminance ★1	L_S	--	TBD	--	mcd
LCM Surface brightness uniform ★2	L_D	80	--	--	%



宇华国际科技有限公司

YuHua INT,L Technology Co., LIMITED

5. DC CHARACTERISTICS

5.1 Parameter

Item	Symbol	Value			Units	Remark
		Min	Typ	Max		
Power supply voltage	VDD	3.0	3.3	3.6	V	
	AVDD	12	12.2	12.4	V	
	VGH	20	22	24	V	
	VGL	-11	-10	-9	V	
Input signal voltage	VCOM	4.39	5.39	6.39	V	
Logic high level input voltage	VIH	0.7xVDD	-	VDD	V	Note 1
Logic low level input voltage	VIL	VSS	-	0.3xVDD	V	

(Ta = 25 ± 2°C)

Note 1: Including signal: U/D、L/R、RESET、STBYB、SELB、CABCEN0、CABCEN1.

5.2 Current Consumption

Item	Symbol	Value			Units	Remark
		Min	Typ	Max		
Current for Driver	IVDD	10	15	20	mA	VDD=3.3V
	IAVDD	8	45	65	mA	AVDD=12.2V
	IVGH	0.1	0.6	2	mA	VGH=22V
	IVGL	0.1	0.6	2	mA	VGL=-10V

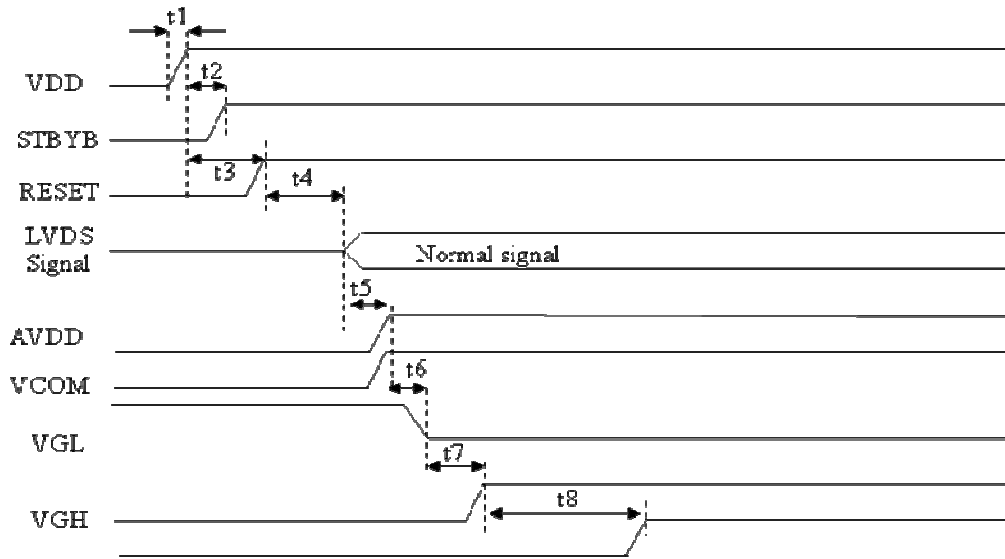
5.3 Power Sequence

Power on



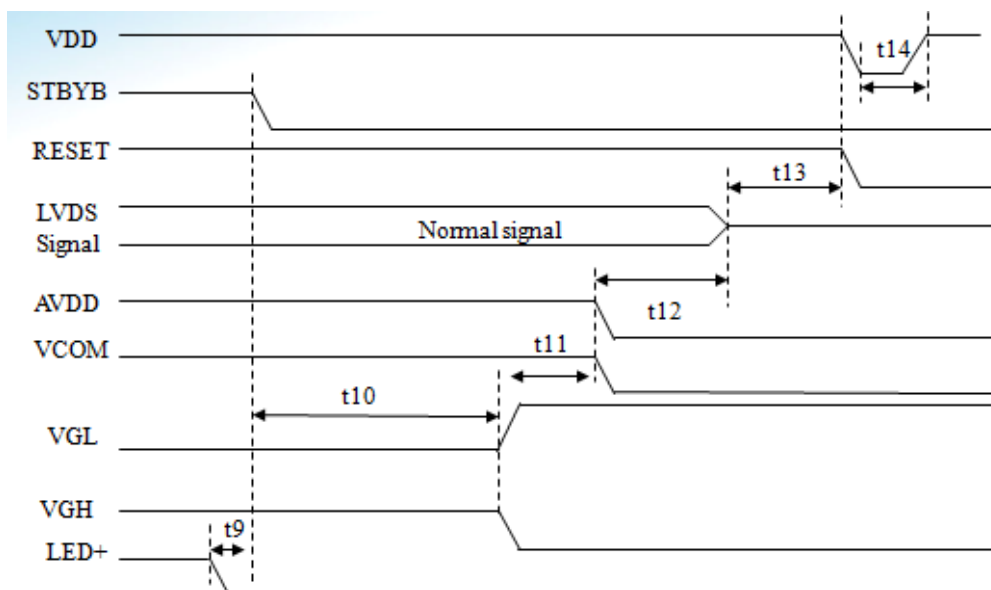
宇华国际科技有限公司

YuHua INT,L Technology Co., LIMITED



Symbol	SPEC			Unit
	Min.	Typ.	Max.	
t1	1	10	20	ms
t2	20	35	50	us
t3	1	10(RC Delay)	12	ms
t4	30	50	100	ms
t5	0.1	5	20	ms
t6	20	70	120	ms
t7	40	90	140	ms
t8	150	170	200	ms

Power off





宇华国际科技有限公司
YuHua INT,L Technology Co., LIMITED

Symbol	SPEC			Unit
	Min.	Typ.	Max.	
t9	0.1	1	10	ms
t10	120	150	200	ms
t11	50	100	200	ms
t12	1	10	20	ms
t13	0.1	10	100	ms
t14	500	-	-	ms

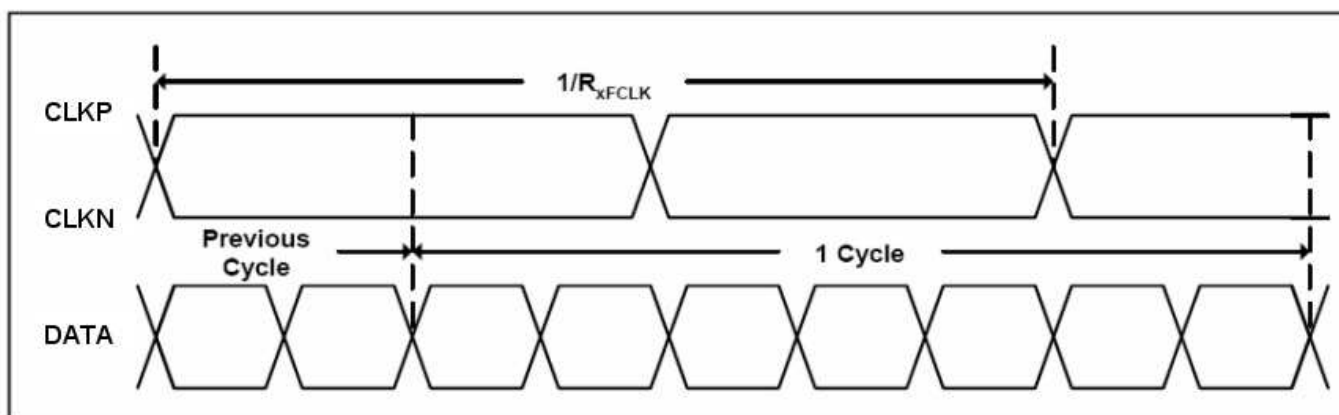


6. Timing Characteristics

6.1 AC Electrical Characteristics

Parameter	Symbol	Min	Typ	Max	Units	Condition
Clock frequency	RxFCLK	26.2	51.2	71	MHz	
Input data skew margin	TRSKM	500	500	$1/(2 \cdot RxFCLK)$	ps	Typical value for 1024*600 resolution
Clock high time	TLVCH		$4/(7 \cdot RxFCLK)$		ns	$ VID =400\text{mv}$ $RxVCM=1.2\text{V}$ $RxFCLK=71\text{MHz}$ $VDD_LVDS=3.3\text{V}$
Clock low time	TLVCL		$3/(7 \cdot RxFCLK)$		ns	
VSD setup time	TenPLL		$0 < TenPLL < 150$		us	

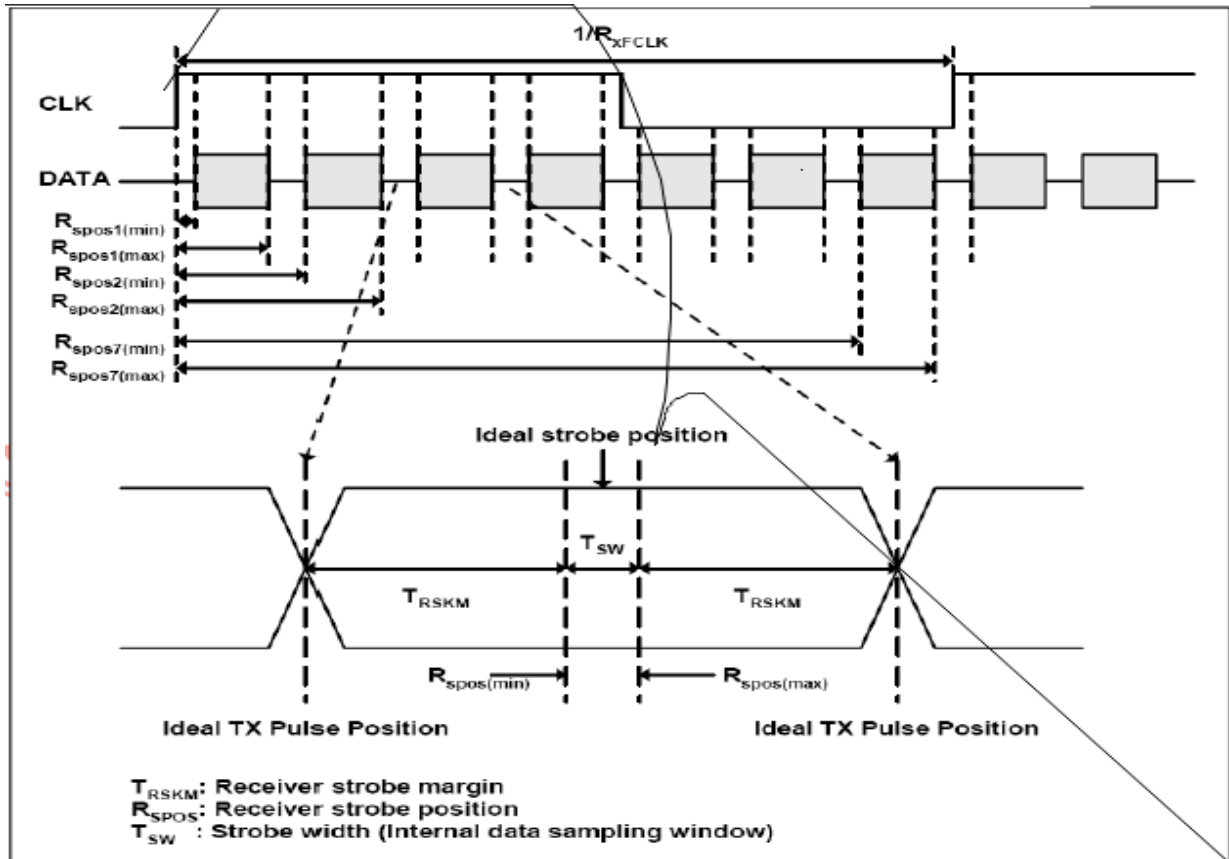
6.2 Input Clock and Data Timing Diagram





宇华国际科技有限公司

YuHua INT,L Technology Co., LIMITED



6.3 Electrical Characteristics

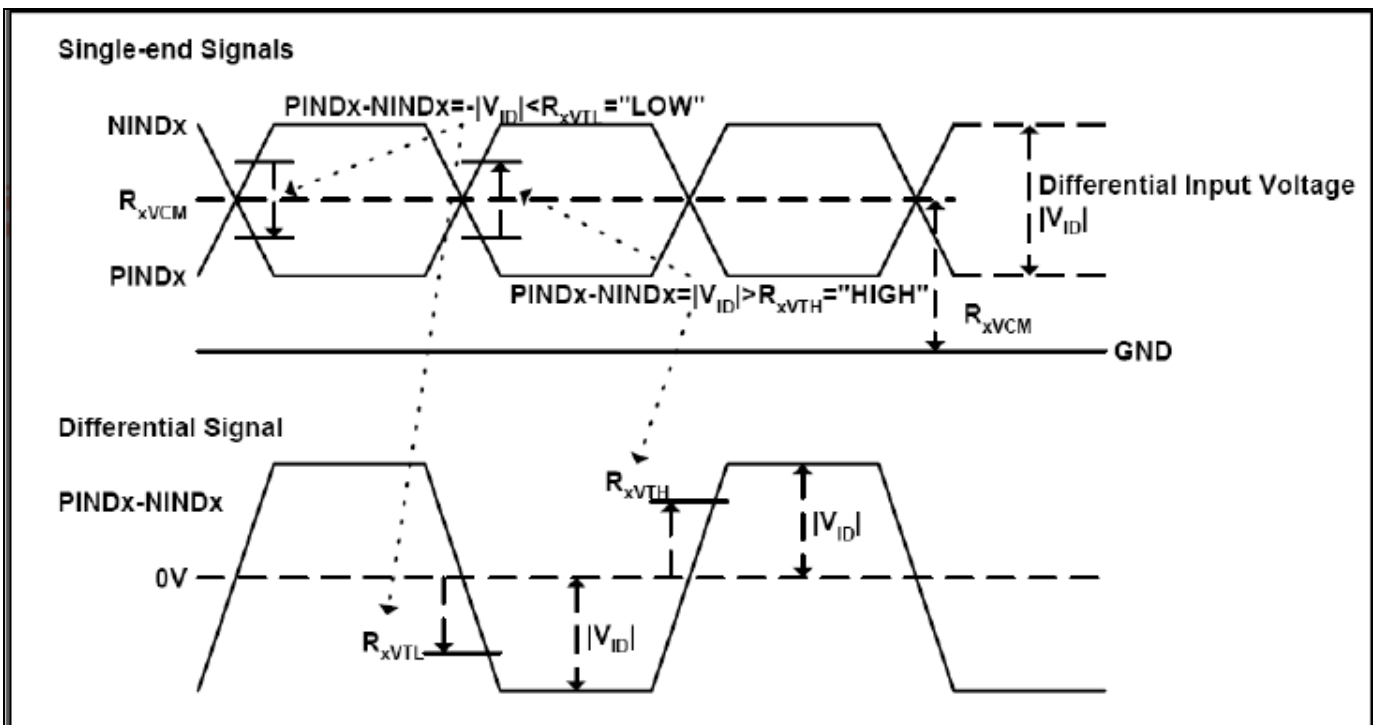
Parameter	Symbol	Min	Typ	Max	Units	Condition
Differential input high threshold voltage	RxVTH	0.1	0.2	VID	V	RxVCM=1.2V
Differential input low threshold voltage	RxVTL	- VID	-0.2	-0.1	V	
Input voltage range (singled-end)	RxVIN	0	1.2±0.4	2.4	V	
Differential input common mode voltage	RxVCM	VID /2	1.2	2.1- VID /2	V	
Differential input voltage	VID	0.2	0.4	0.6	V	
Differential input leakage current	RVxliz	-10	0	+10	uA	



宇华国际科技有限公司

YuHua INT,L Technology Co., LIMITED

LVDS Digital Operating Current	I _{ddlvs}	8	22	30	mA	Fclk=65MHz, V _{DD} =3.3V
LVDS Digital Standby Current	I _{stlvs}	0	200	300	uA	Clock & all Functions are stopped
LVDS Differential impedance	Z _{diff}	90	100	110	ohm	RXINx+/-, RXINCLK+/-



6.4 Timing

Parallel	Symbol	Vaule			Unit
		Min	Typ	Max	
DCLK Frequency Frame rate=60Hz	fclk	42.5	51.2	67.2	MHz
Horizontal display area	thd	1024			DCLK
HSYNC period time	thpw	1164	1344	1400	DCLK
HSYNC blanking	thb+thfp	140	320	376	DCLK
Vertical display area	tvd	600			H
VSYNC period time	tvpw	610	635	800	H
VSYNC blanking	tvb+tvfp	10	35	200	H

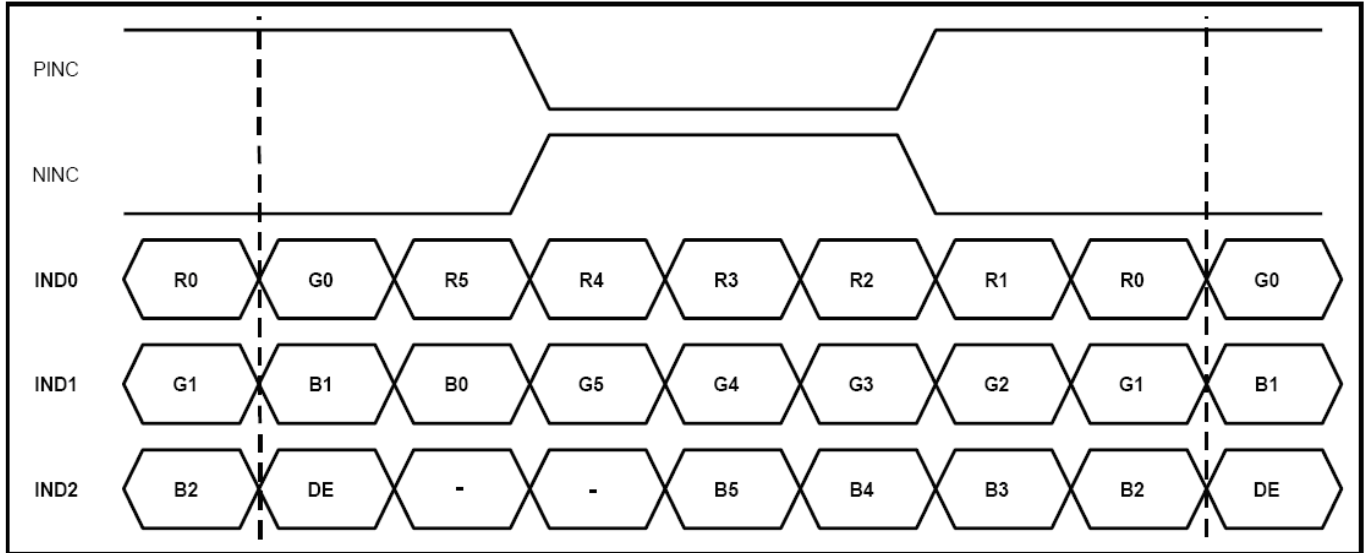


宇华国际科技有限公司

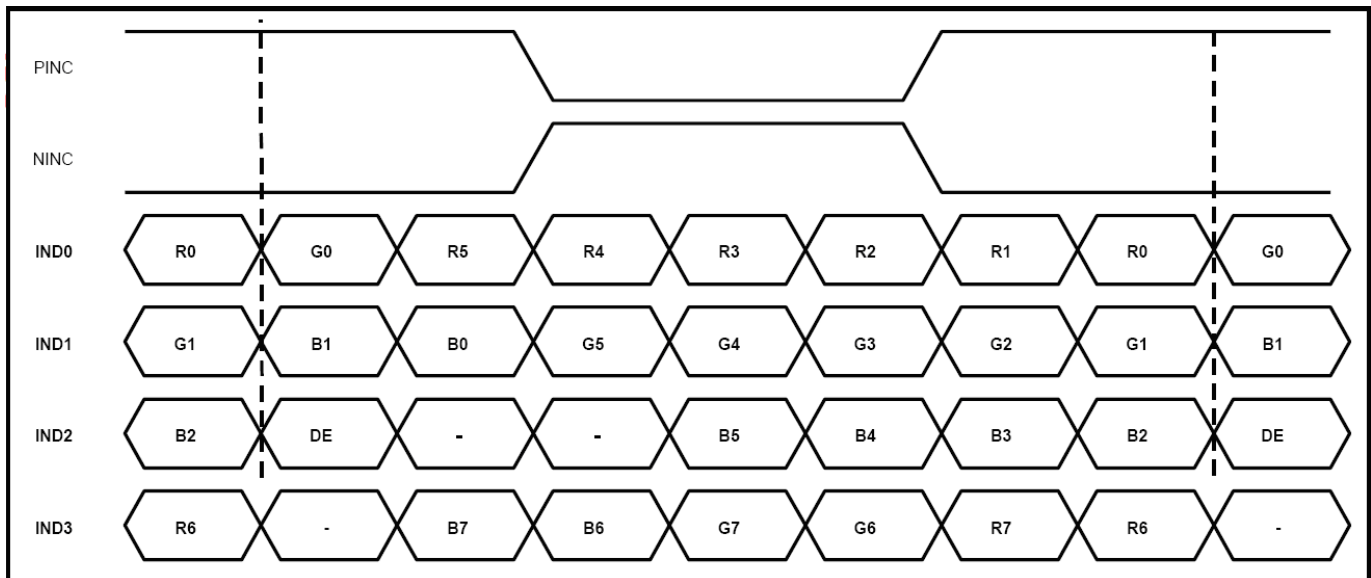
YuHua INT,L Technology Co., LIMITED

6.5 Data Input Format

6bit LVDS input



8bit LVDS input





宇华国际科技有限公司

YuHua INT,L Technology Co., LIMITED

7. OPTICAL CHARACTERISTICS

7.1 Optical Specification

Item	Symbol	Condition	Values			Unit	Remark
			Min.	Typ.	Max.		
Viewing angle (CR≥ 10)	θ_L	$\Phi=180^\circ$ (9 o'clock)		80	-	degree	Note 1
	θ_R	$\Phi=0^\circ$ (3 o'clock)		80	-		
	θ_T	$\Phi=90^\circ$ (12 o'clock)		80	-		
	θ_B	$\Phi=270^\circ$ (6 o'clock)		80	-		
Response time	T_{ON}	Normal $\theta=\Phi=0^\circ$	-	25	35	msec	Note 3
	T_{OFF}		-	25	35	msec	Note 3
Contrast ratio	CR		400	500	-	-	Note 4
Color chromaticity	W_X		0.26	0.31	0.36	-	Note 2 Note 5
	W_Y		0.29	0.33	0.38	-	Note 6
Luminance	L		750	850	-	cd/m ²	Note 6
Luminance uniformity	Y_U		70	75	-	%	Note 7

Test Conditions:

1. $V_{DD}=3.3V$, $I_L=210mA$ (Backlight current), the ambient temperature is $25^\circ C$.
2. The test systems refer to Note 2.

7.2 Basic measure condition

(1) Driving voltage

Based on item 5. DC CHARACTERISTICS and 6. AC CHARACTERISTICS

(2) Ambient temperature: $T_a=25^\circ C$

(3) Testing point: measure in the display center point and the test angle $\Theta=0^\circ$

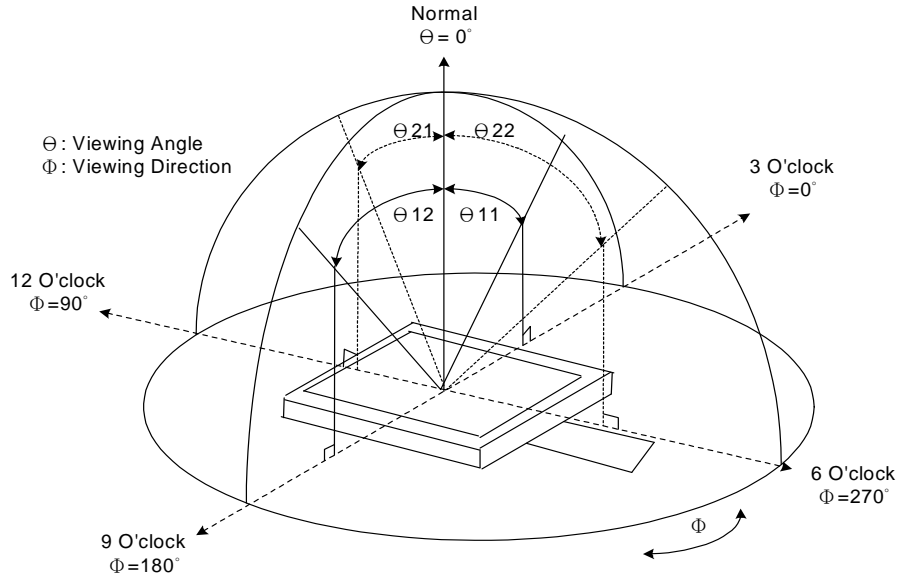
(4) Testing Facility: Environmental illumination: ≤ 1 Lux



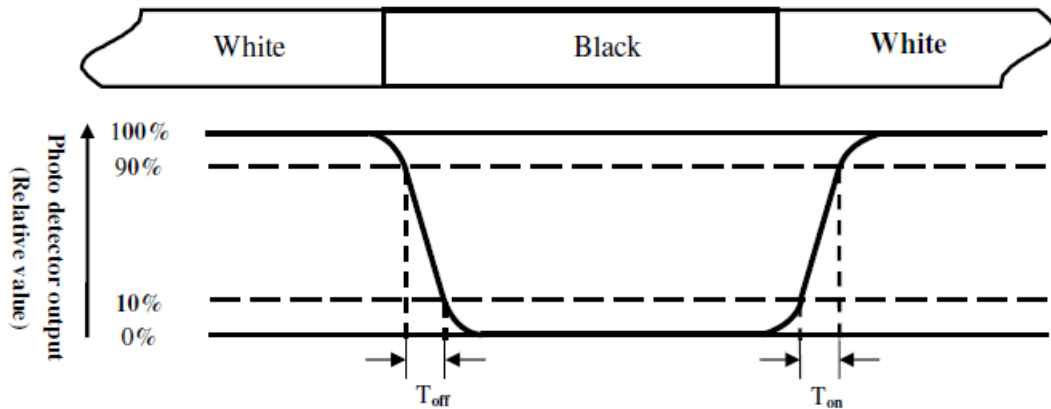
宇华国际科技有限公司

YuHua INT,L Technology Co., LIMITED

Note 7-1: Viewing angle diagrams



Note 7-2: Response time



Note 7-3: Transmittance

The transmittance is measured on INX stabilized backlight.

Note 7-4: Contrast ratio

The contrast ratio can be calculated by the following expression.

$$\text{Contrast Ratio (CR)} = \text{White} / \text{Black}$$

Note 7-5 Chromaticity

The chromaticity is measured in CIE 1931 at the center point of C Light Source.



9. HANDLING CAUTIONS

9.1 ESD (Electrical Static Discharge) strategy

ESD will cause serious damage of the panel, ESD strategy is very important in handling. Following items are the recommended ESD strategy

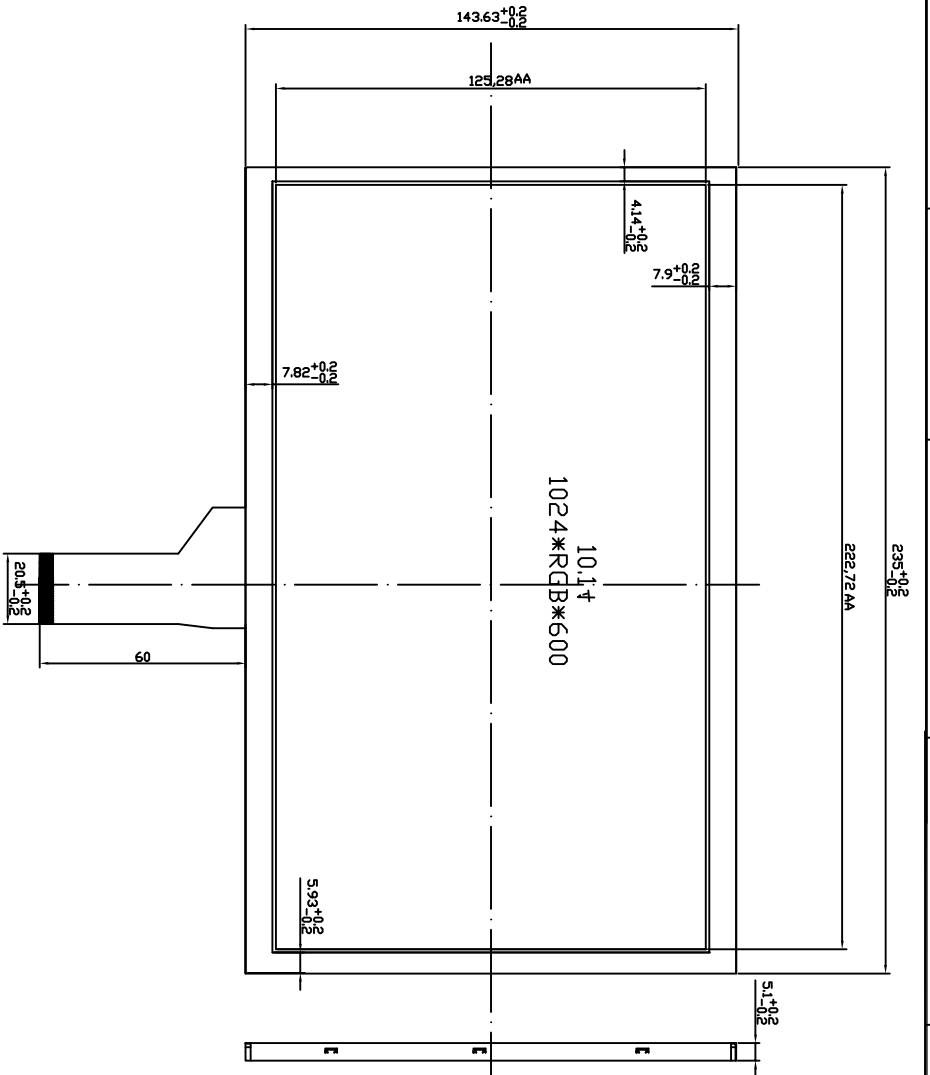
- (1) In handling LCD panel, please wear gloves with non-charged material. Using the conduction ring connects wrist to the earth and the conducting shoes to the earth necessary is.
- (2) The machine and working table for the panel should have ESD protection strategy.
- (3) In handling the panel, ionized airflow decreases the charge in the environment is necessary.
- (4) In the process of assemble module, shield case should connect to the ground.

9.2 Environment

- (1) Working environment of the panel should be in the clean room.
- (2) Because touch panel has protective film on the surface, please remove the protection film slowly with ionized air to prevent the electrostatic discharge.

9.3 Others

- (1) Turn off the power supply before connecting and disconnecting signal input cable.
- (2) Because the connection area of FPC and panel is not so strong, do not handle panel only by FPC or bend FPC.
- (3) Water drop on the surface or condensation as panel power on will corrode panel electrode.
- (4) As the packing bag open, watch out the environment of the panel storage. High temperature and high humidity environment is prohibited.
- (5) In the case the TFT LCD module is broken, please watch out whether liquid crystal leaks out or not. If your hand touches liquid crystal, wash your hands cleanly with water and soap as soon as possible.



1. 视角: ALL
2. 使用温度: -20?-70?, 储存温度: -30?-80?
3. 未标准公差: ?、5
4. LCM 亮度: 800cd/m²

1 2 3 6 7 8

Design by:
(设计)

ATEON

(审查)

Approval By:
(核准)

Date:
(日期)

Page:
(页数)

深圳市宇华微科技有限公司
YUHUA INT'L TECHNOLOGY CO., LTD
MODEL NUMBER :
YH 101MS4003

Item (项目)	Symbol (符号)	min. (最小)	typ. (典型)	max. (最大)	Unit (单位)	Condition (条件)
Main screen luminance (亮度)	Lv				cd/m ²	(8h-7h亮度)
Main screen Color Coordinate (色坐标)	X				%	(色坐标)
Main screen Y Coordinate (色坐标)	Y				%	(色坐标)
Main screen Color Coordinate (色坐标)	X	0.290	0.310	0.330	%	(色坐标)
Main screen Y Coordinate (色坐标)	Y	0.300	0.330	0.340	%	(色坐标)
Forward Voltage (正向电压)	Vf	16.5	18.6	19.6	V	

• Operating Temperature: -20~+70° C • Storage Temperature: -30~+80° C
(工作温度) (储存温度)

由Autodesk教育版产品制作

1/1